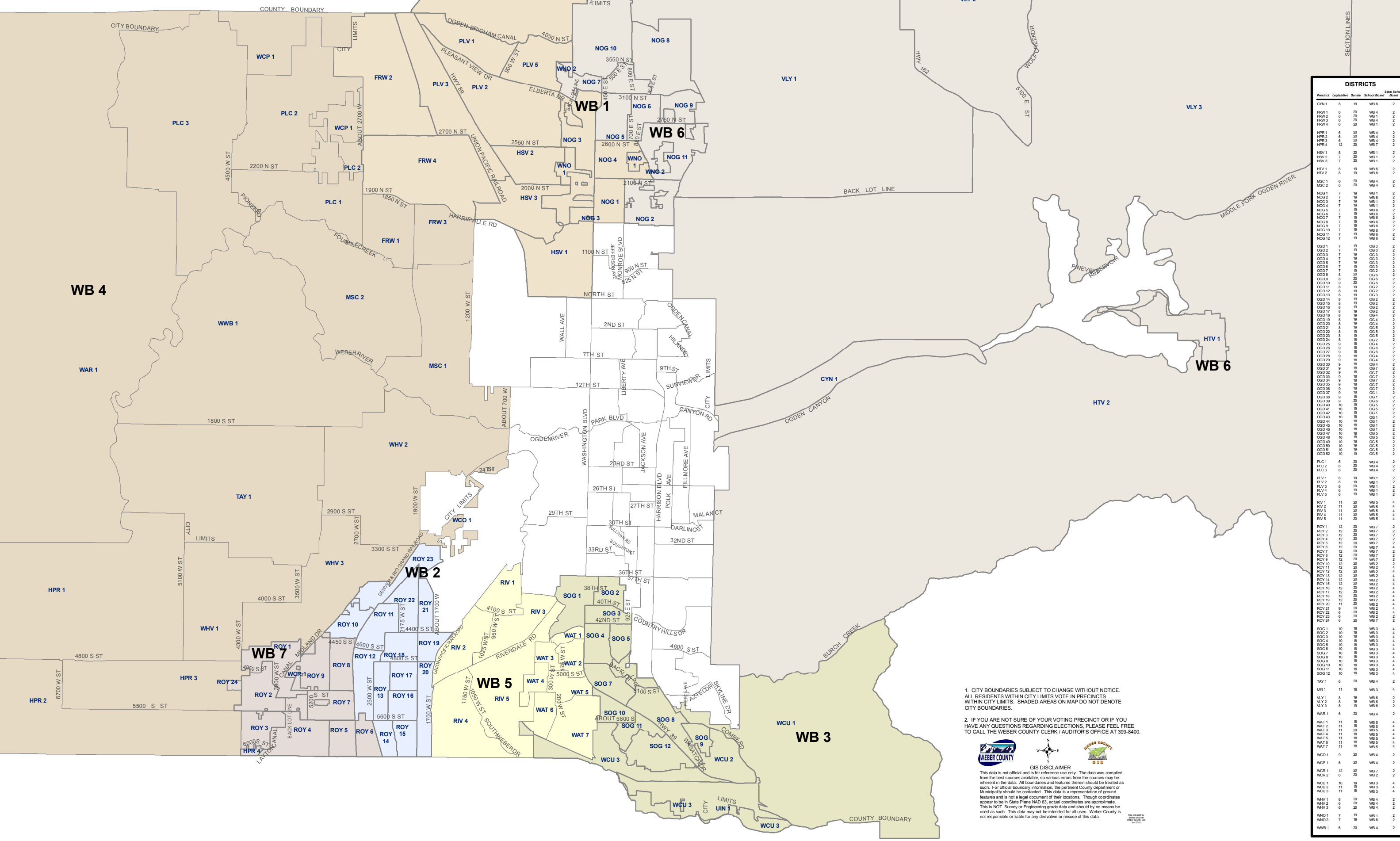


# Weber County School Boards - Weber County

Office of the Clerk / Auditor - Alan D. McEwan, CPA



1. CITY BOUNDARIES SUBJECT TO CHANGE WITHOUT NOTICE. ALL RESIDENTS WITHIN CITY LIMITS VOTE IN PRECINCTS WITHIN CITY LIMITS. SHADED AREAS ON MAP DO NOT DENOTE CITY BOUNDARIES.

2. IF YOU ARE NOT SURE OF YOUR VOTING PRECINCT OR IF YOU HAVE ANY QUESTIONS REGARDING ELECTIONS, PLEASE FEEL FREE TO CALL THE WEBER COUNTY CLERK / AUDITOR'S OFFICE AT 399-8400.



**GIS DISCLAIMER**  
 This data is not official and is for reference use only. The data was compiled from the best sources available, so various errors from the sources may be inherent in the data. All boundaries and features therein should be treated as such. For official boundary information, the pertinent County department or Municipality should be contacted. This data is a representation of ground features and is not a legal document of their locations. Though coordinates appear to be in State Plane NAD 83, actual coordinates are approximate. This is NOT a Survey or Engineering grade data and should by no means be used as such. This data may not be intended for all uses. Weber County is not responsible or liable for any derivative or misuse of this data.

DISTRICTS				
Precinct	Legislative	Senate	School Board	State School Board
CYN 1	8	19	WB 6	2
FRW 1	6	20	WB 4	2
FRW 2	6	20	WB 1	2
FRW 3	6	20	WB 4	2
FRW 4	6	20	WB 3	2
HPR 1	6	20	WB 4	2
HPR 2	6	20	WB 4	2
HPR 3	6	20	WB 4	2
HPR 4	12	20	WB 7	2
HSV 1	8	20	WB 1	2
HSV 2	7	20	WB 1	2
HSV 3	7	20	WB 1	2
HTV 1	8	19	WB 6	2
HTV 2	8	19	WB 6	2
MSC 1	6	20	WB 4	2
MSC 2	6	20	WB 4	2
NOG 1	7	19	WB 1	2
NOG 2	7	19	WB 6	2
NOG 3	7	19	WB 1	2
NOG 4	7	19	WB 6	2
NOG 5	7	19	WB 6	2
NOG 6	7	19	WB 6	2
NOG 7	7	19	WB 6	2
NOG 8	7	19	WB 6	2
NOG 9	7	19	WB 6	2
NOG 10	7	19	WB 6	2
NOG 11	7	19	WB 6	2
NOG 12	7	19	WB 6	2
OGD 1	7	19	OG 3	2
OGD 2	7	19	OG 3	2
OGD 3	7	19	OG 3	2
OGD 4	7	19	OG 3	2
OGD 5	7	19	OG 3	2
OGD 6	7	19	OG 2	2
OGD 7	7	19	OG 2	2
OGD 8	8	20	OG 6	2
OGD 9	8	20	OG 6	2
OGD 10	9	20	OG 5	2
OGD 11	9	20	OG 5	2
OGD 12	8	19	OG 2	2
OGD 13	8	19	OG 2	2
OGD 14	8	19	OG 2	2
OGD 15	8	19	OG 2	2
OGD 16	8	19	OG 2	2
OGD 17	8	19	OG 2	2
OGD 18	8	19	OG 4	2
OGD 19	8	19	OG 4	2
OGD 20	8	19	OG 4	2
OGD 21	8	19	OG 5	2
OGD 22	8	19	OG 5	2
OGD 23	8	19	OG 5	2
OGD 24	8	19	OG 5	2
OGD 25	9	18	OG 4	2
OGD 26	9	18	OG 4	2
OGD 27	9	18	OG 4	2
OGD 28	9	18	OG 4	2
OGD 29	9	18	OG 4	2
OGD 30	9	18	OG 4	2
OGD 31	9	18	OG 7	2
OGD 32	9	18	OG 7	2
OGD 33	9	18	OG 7	2
OGD 34	9	18	OG 7	2
OGD 35	9	18	OG 7	2
OGD 36	9	18	OG 7	2
OGD 37	9	18	OG 7	2
OGD 38	9	18	OG 1	2
OGD 39	9	18	OG 6	2
OGD 40	9	18	OG 6	2
OGD 41	10	19	OG 5	2
OGD 42	10	19	OG 5	2
OGD 43	10	18	OG 1	2
OGD 44	10	18	OG 1	2
OGD 45	10	18	OG 1	2
OGD 46	10	18	OG 5	2
OGD 47	10	18	OG 5	2
OGD 48	10	18	OG 5	2
OGD 49	10	18	OG 5	2
OGD 50	10	18	OG 5	2
OGD 51	10	18	OG 5	2
OGD 52	10	18	OG 5	2
PLC 1	6	20	WB 4	2
PLC 2	6	20	WB 4	2
PLC 3	6	20	WB 4	2
PLV 1	6	19	WB 1	2
PLV 2	6	19	WB 1	2
PLV 3	6	19	WB 1	2
PLV 4	6	19	WB 1	2
PLV 5	6	19	WB 1	2
RV 1	11	20	WB 5	4
RV 2	11	20	WB 5	4
RV 3	11	20	WB 5	4
RV 4	11	20	WB 5	4
RV 5	11	20	WB 5	4
ROY 1	12	20	WB 7	2
ROY 2	12	20	WB 7	2
ROY 3	12	20	WB 7	2
ROY 4	12	20	WB 7	2
ROY 5	12	20	WB 7	2
ROY 6	12	20	WB 7	2
ROY 7	12	20	WB 7	2
ROY 8	12	20	WB 7	2
ROY 9	12	20	WB 7	2
ROY 10	12	20	WB 7	2
ROY 11	12	20	WB 7	2
ROY 12	12	20	WB 7	2
ROY 13	12	20	WB 7	2
ROY 14	12	20	WB 7	2
ROY 15	12	20	WB 7	2
ROY 16	12	20	WB 7	2
ROY 17	12	20	WB 7	2
ROY 18	12	20	WB 7	2
ROY 19	12	20	WB 7	2
ROY 20	12	20	WB 7	2
ROY 21	12	20	WB 7	2
ROY 22	12	20	WB 7	2
ROY 23	12	20	WB 7	2
ROY 24	12	20	WB 7	2
SOG 1	10	18	WB 3	4
SOG 2	10	18	WB 3	4
SOG 3	10	18	WB 3	4
SOG 4	10	18	WB 3	4
SOG 5	10	18	WB 3	4
SOG 6	10	18	WB 3	4
SOG 7	10	18	WB 3	4
SOG 8	10	18	WB 3	4
SOG 9	10	18	WB 3	4
SOG 10	10	18	WB 3	4
SOG 11	10	18	WB 3	4
SOG 12	10	18	WB 3	4
TAY 1	6	20	WB 4	2
UN 1	11	18	WB 3	4
VLV 1	8	19	WB 6	2
VLV 2	8	19	WB 6	2
VLV 3	8	19	WB 6	2
WAR 1	6	20	WB 4	2
WAT 1	11	18	WB 5	4
WAT 2	11	18	WB 5	4
WAT 3	11	18	WB 5	4
WAT 4	11	18	WB 5	4
WAT 5	11	18	WB 5	4
WAT 6	11	18	WB 5	4
WAT 7	11	18	WB 5	4
WCD 1	9	20	WB 4	2
WCP 1	6	20	WB 4	2
WCU 1	10	19	WB 3	4
WCU 2	11	18	WB 3	4
WCU 3	11	18	WB 3	4
WHV 1	6	20	WB 4	2
WHV 2	6	20	WB 4	2
WHV 3	6	20	WB 4	2
WNO 1	7	19	WB 6	2
WNO 2	7	19	WB 6	2