

## Consumer Tips

1. Shop for a repair facility and technician who are familiar with your vehicle's emissions system.
2. Secure a written estimate that includes diagnosis and recommended repairs.
3. Get a second technician's opinion or contact the Vehicle Emissions Center if you are not satisfied with the estimate or diagnosis.
4. Check your vehicle owner's manual for information specific to your vehicle. Many emissions control devices are covered by warranties.

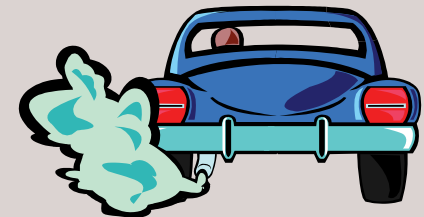


### Vehicle Emissions Center

477 23rd Street  
Ogden, UT 84401  
Phone: 801-399-7140

**Your vehicle failed  
the emissions test.**

**Now what do you do?**



Website: [www.webermorganhealth.org](http://www.webermorganhealth.org)



# Automobiles and Air Pollution



Keeping your vehicle in working order, helps keep the grunge out of our air.

When meteorological conditions are bad, high levels of air pollution accumulate in Weber County.

Concentrations of particulate matter, ozone or carbon monoxide can reach unhealthy

levels in our air. Motor vehicles are responsible for more than 70% of the pollution that affects public health.

## Vehicle Inspections

To minimize automobile pollution, all 1968 and newer vehicles are inspected and repaired if needed.

Inspection items include:

- Emissions control devices.
- Tailpipe emissions of hydrocarbons and carbon monoxide.
- Proper functioning of the on-board diagnostic (OBD) system.

## Emission Control Devices

Vehicles are inspected to ensure that emissions-control devices are working. On cars newer than 1989, these devices must be installed and working before the test can be performed. Catalytic converter and air-injection systems are two of the most critical devices that are checked. The gas cap is also checked to see if it is sealing properly.

## Tailpipe Emissions

Vehicles model years 1968-1995 will receive a two-speed idle test. The cars are run at idle and 2500 rpm. If emissions exceed the standards, based on the age and weight of the vehicle, they will fail.

## On-Board Diagnostics (OBD)

Most 1996 and newer vehicles are tested using the OBD check. These vehicles have a malfunction indicator that comes on when the vehicle's computer system indicates that one or more of the emissions control systems have failed.

The I/M technician will access the OBD to ensure it is working properly. Each emissions control system has a monitor that checks its performance as you drive. Should any of the emissions systems malfunction, the monitor alerts the on-board computer.

## Repairing Failed Vehicles

The purpose of the I/M program is to identify vehicles emitting high levels of pollution and to reduce those levels by requiring the proper repairs. By doing so, the performance and fuel economy of the vehicle will improve.

Keep in mind that newer computer controlled vehicles that fail the I/M inspections generally require the services of a skilled automotive-repair technician, using diagnostic equipment.

## Emissions Warranties

Warranties differ between vehicle manufacturers. Check your owner's manual to see if your vehicle is under warranty.

If your vehicle is under warranty and has failed the emissions inspection **and**:

- The test failure did not result from misuse or failure to follow the manufacturer's written maintenance plan **and**
- You present the vehicle to a warranty-authorized representative, along with your I/M report form, during the relevant warranty period **then**
- The manufacturer must repair the vehicle so that it will pass the emissions test.

## Waivers

Occasionally, there are cases where repairs have been made toward the cause of the high emission readings and they fail to reduce the pollution levels below the standard. In those cases, a repair waiver may be issued by the Weber-Morgan Health Department. The waiver is a last resort.

To see if you qualify for a waiver, ask your repair station or call the Vehicle Emissions Center, 801-399-7140.

Vehicles newer than 1996 will not qualify for waivers.

If you have recently disconnected the battery, the OBD system will not be ready for testing. This does not mean your vehicle has failed. Normal driving allows the OBD to reset and become ready for testing.

If you believe your vehicle was not tested in accordance with the I/M Program Regulations, it may be tested at the Vehicle Emissions Center.