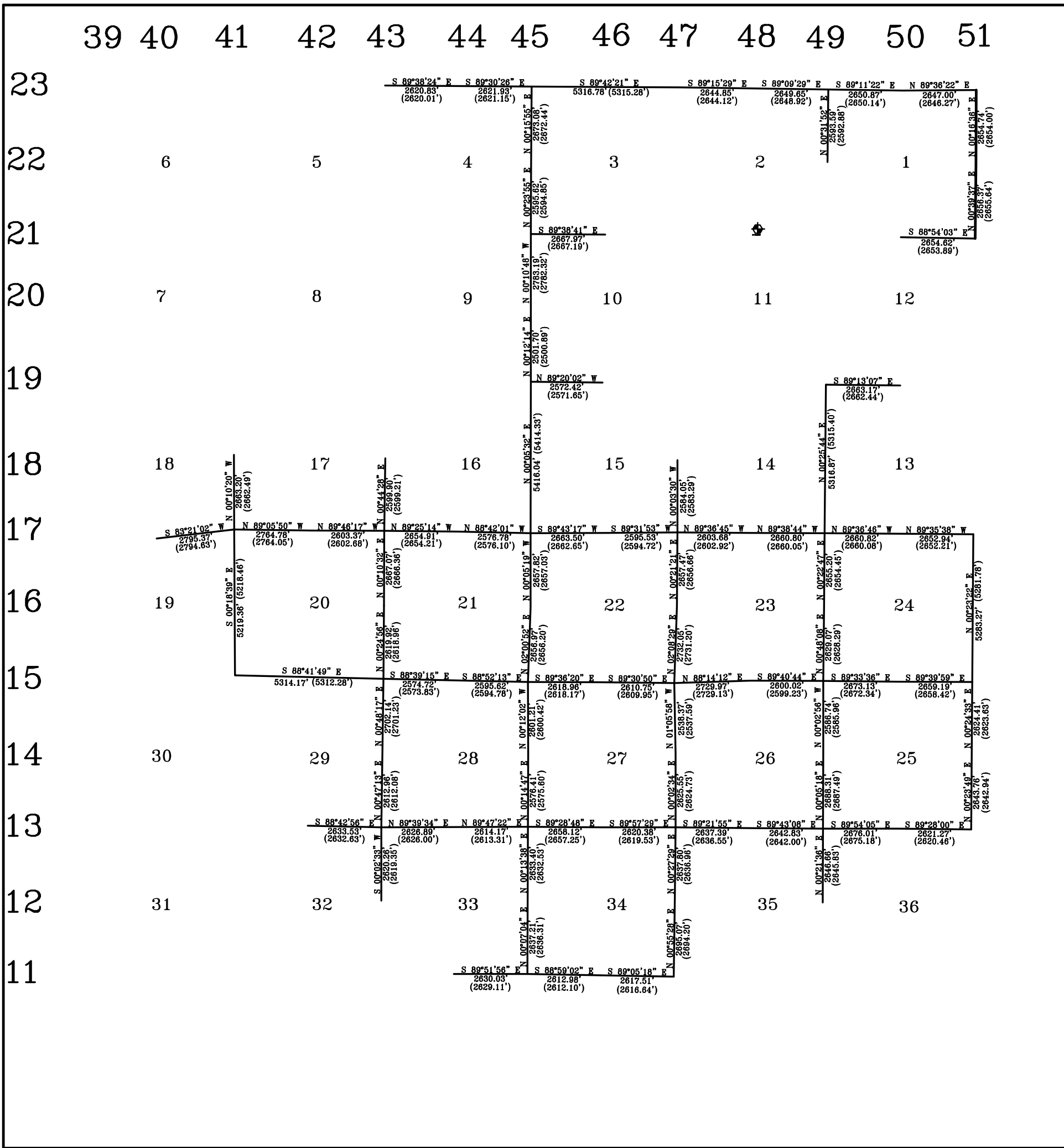


T 6 N R 1 E



NO.	DATE	REVISIONS	REMARKS	NO.	DATE	REVISIONS	REMARKS

COUNTY MONUMENT POSITIONS TOWNSHIP 6 NORTH, RANGE 1 EAST

PREPARED BY WEBER COUNTY SURVEYOR'S OFFICE

Bearings are Utah State Plane NAD1927 grid bearings as established and maintained by the Weber County Surveyor's Office. Distances shown in parenthesis are Utah State Plane Grid Distances. Distances without parenthesis are ground distances.

NOTE:

These bearing sheets were originally prepared by the Weber County Surveyor's Office in Feb. 1987. Since that time some monument locations have been moved or corrected. The data shown hereon has been up-dated to reflect those changes. It is not intended to take away from our predecessors the excellent work they did on these sheets.

This plat depicts actual Weber County Monuments or Corner Positions determined from witness or reference monuments. They should not be construed as the locations of the Original U.S. Government Section Corners.

APPROVED: _____

Additional monument information can be obtained from the Office of the Weber County Surveyor or found on the World Wide Web at:
www.co.weber.ut.us/surveyor/survyrhp.html

WEBER COUNTY SURVEYOR